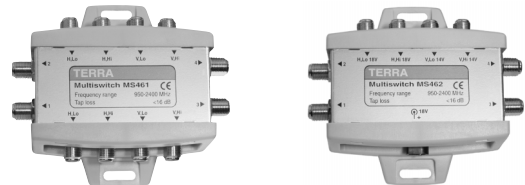


4 cable system Cascadable multiswitches

- cascadable distribution system of 4 SAT polarities for floor by floor installation and star distribution
- economical power using concept - no DC power consumption from line; subscriber line is powered from a corresponding receiver
- possibility to supply DC for LNBs through end line multiswitches MS462, MS464 as well as line amplifier SA411
- end line multiswitches MS462, MS464 create 14 V DC for powering via vertical lines; 18 V DC feeds via horizontal lines
- to make easier level equalization in distribution network, two types of multiswitches (active and passive) with different tap gain are produced
- depending on interconnection cable up to 5 multiswitches can be connected into cascade without using a compensation amplifier
- very small dimensions with good technical performance
- recommended power supply - SA125A-1913G-S (page 19)



MS461, MS463

through line 4x4 multiswitches
(MS461 - passive, MS463 - active)

MS462, MS464

end line 4x4 multiswitches
(MS462 - passive, MS464 - active)

Technical specifications

T Y P E		MS461	MS463	MS462	MS464
Ordering number		01730	01732	01731	01733
Frequency range		950-2400MHz			
Tap gain		-16 dB	3 dB	-16 dB	3 dB
SAT inputs decoupling		> 30 dB			
Outputs decoupling		> 25 dB	> 30 dB	> 25 dB	> 30 dB
Through loss		< 3 dB			
Maximal output level IMD3=35 dB(EN50083-3)		-	93 dB μ V	-	93 dB μ V
Current consumption from receiver		< 35 mA	< 70 mA	< 35 mA	< 70 mA
Control signals	V/Lo, H/Lo	11.5-14.5 V/0 kHz, 16.5-19 V/0 kHz			
	V/Hi, H/Hi	11.5-14.5 V/22 kHz, 16.5-19 V/22 kHz			
External DC powering through 2.1/5.5 mm clamp		-		+18 V & 1.0 A max.	
DC through pass		1.0 A max.		-	
Operating temperature range		-20° ± + 50° C			
Dimensions		106x76x34mm		106x76x34mm	
Weight (packed)		0.18 kg		0.17 kg	
		